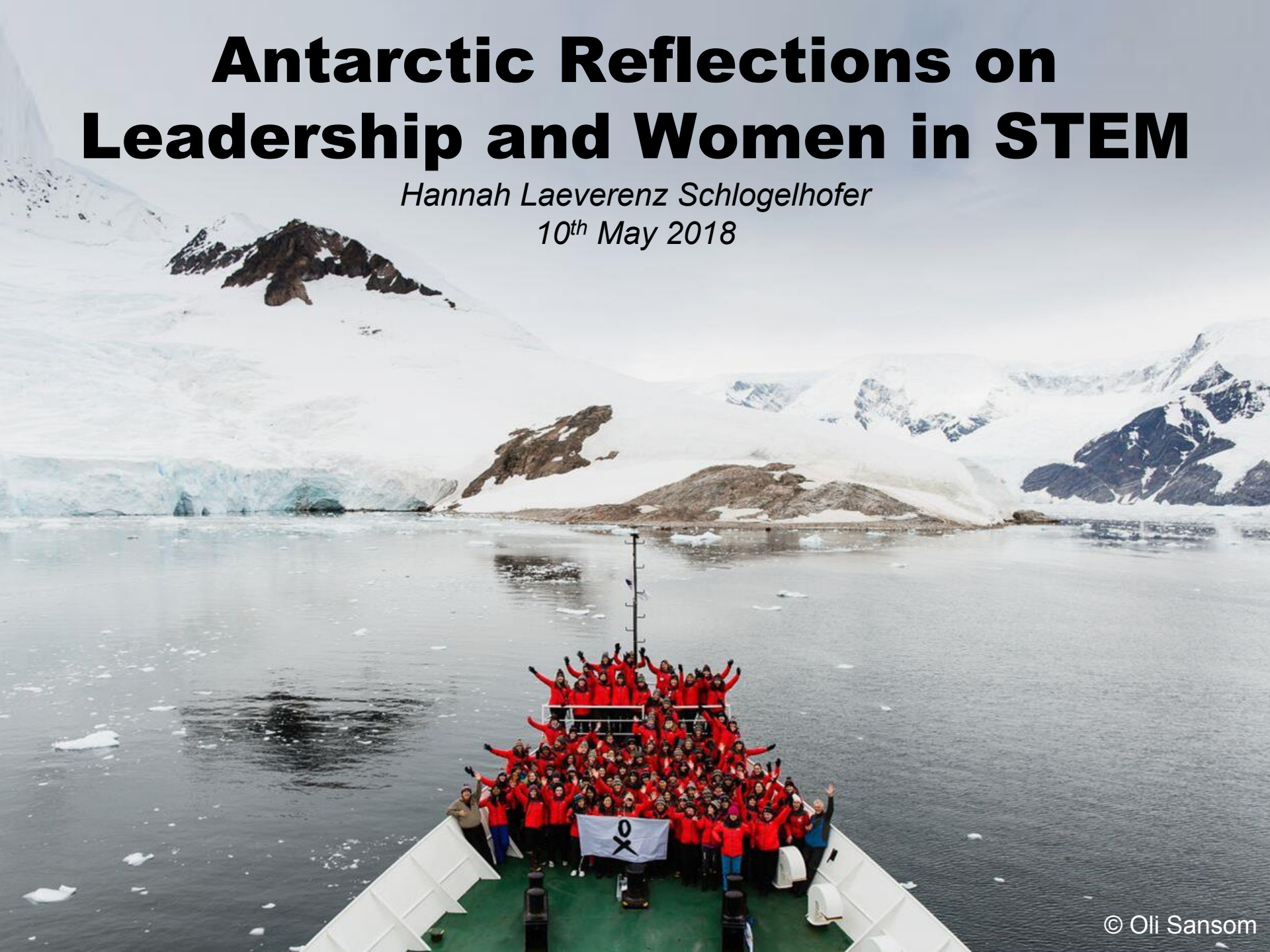


Antarctic Reflections on Leadership and Women in STEM

Hannah Laeverenz Schlogelhofer
10th May 2018



Homeward Bound: Building a global network of 1,000 women in STEMM to influence policy and decision making as it shapes our planet.



**WOMEN ARE NOT
THE FUTURE, THEY ARE
THE PRESENT:
WE ARE CHANGING
THE STORY RIGHT NOW**

**SANDRA GUZMÁN, MEXICO
HB 2018 PARTICIPANT FOR
INTERNATIONAL WOMENS DAY**



HOMewardBOUNDPROJECTS.COM.AU

Why Women? Why Scientists?

Less than 26% of the world's researchers are women and even less are in leadership roles

Many barriers contribute to the low representation of women including lifestyle commitments, lack of female mentors and role models and discrimination in the workplace

Studies have shown that women leaders provide more economic benefit and their leadership styles tend to be more open, collaborative and less hierarchical

Science touches every aspect of our lives and in particular now when the sustainability of the planet is in crisis



Why Antarctica?

- Ideal setting to discuss the future of humankind in an age of climate change.
- Remoteness allowed for us to be present and inspired in a way we could never achieve at a regular conference venue.
- Historically Antarctica is symbolic for women overcoming barriers against inclusion.
- Women were originally excluded from early exploration of the continent based on the attitude that women could not handle the extremes in temperature or crisis situations.

What is Antarctica All About?

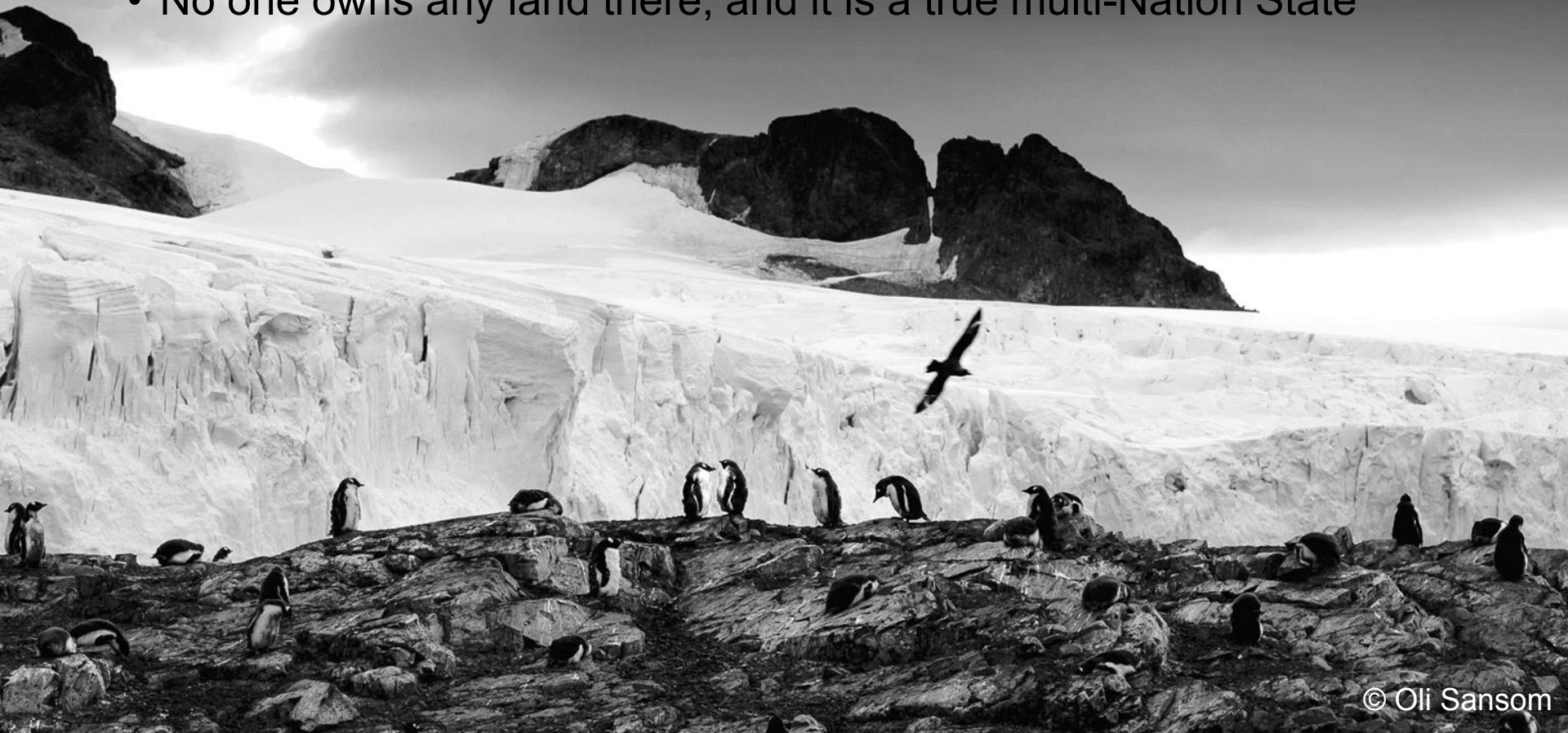
- Holds 90% of the Earth's ice
- 70% of the Earth's fresh water
- 10% of the Earth's Land
- 1.5x bigger than the USA
- Only 0.3% of the continent ice-free but that is where 99% of the biodiversity occurs



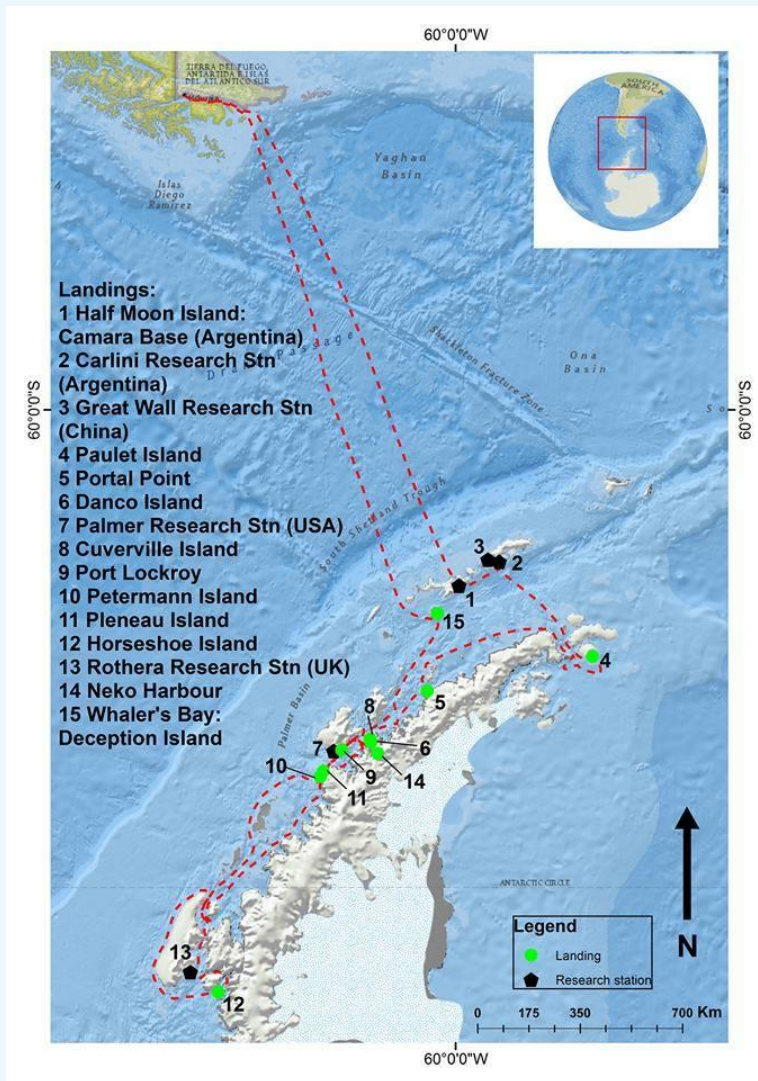
The Antarctic Treaty

An Inspiring Example of Leadership

- Negotiated during the height of the Cold War, primarily between Russia and the US, it was signed in 1959
- The Treaty dedicated the entire continent to Peace and Science
- No one owns any land there, and it is a true multi-Nation State



Where did we go?



We made it all the way to Rothera Base, part of the British Antarctic Survey, which is approximately 67.34' South Longitude

We visited 5 Research Stations in total withstanding difficult weather, dangerous oceans and frozen seas but more on that later

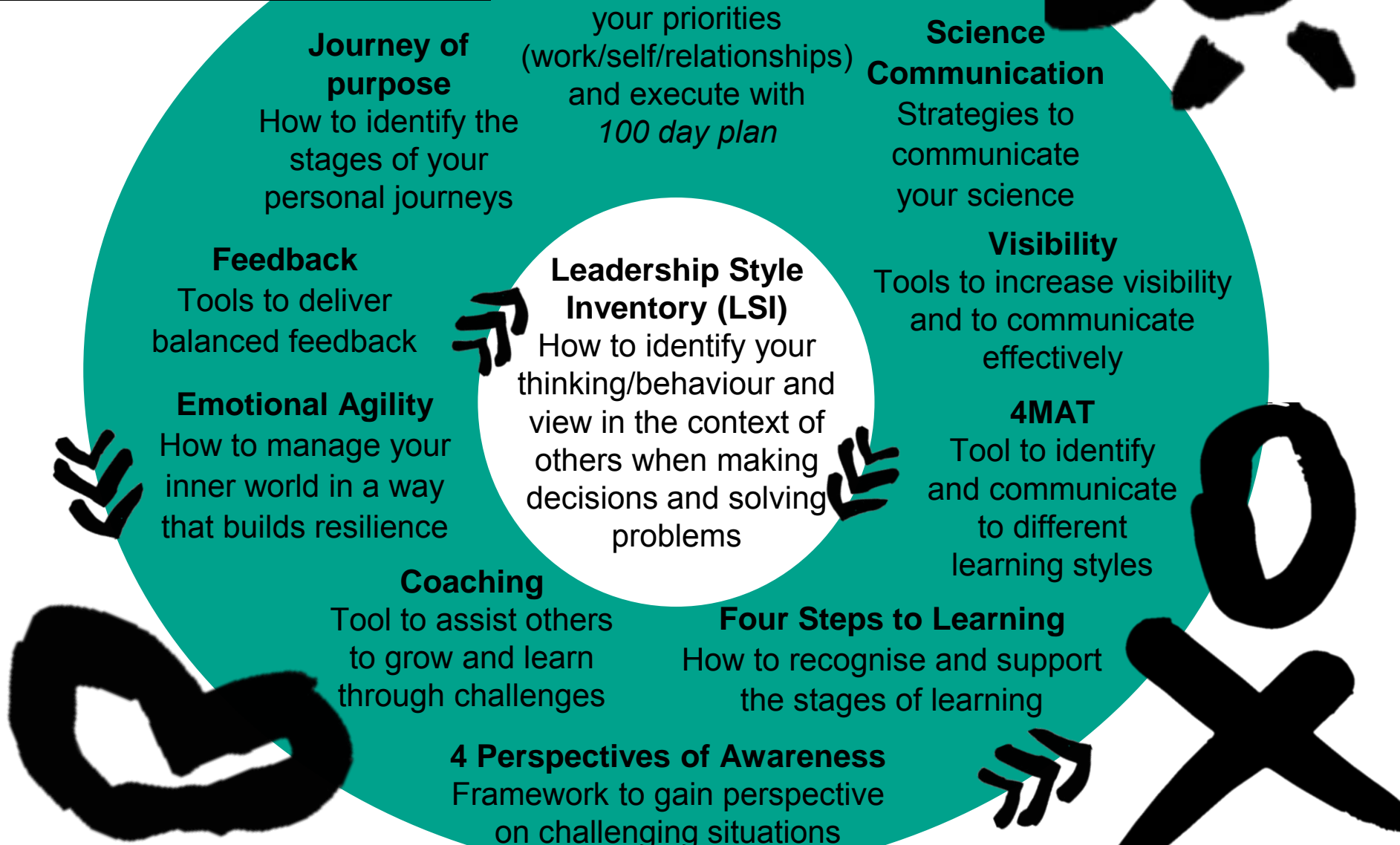
OX

Who is the Homeward Bound Team?

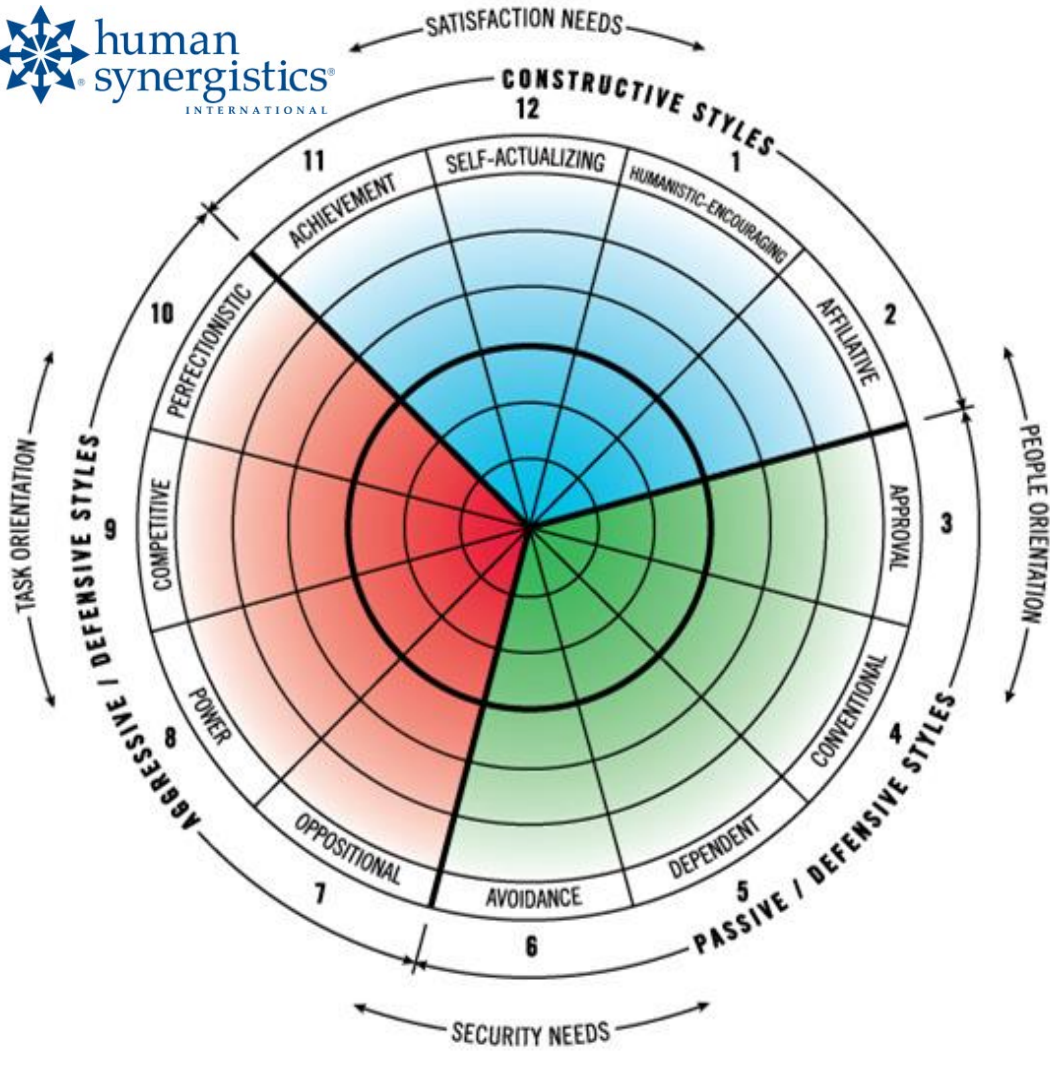
- Fabian Dattner, **Co-founder**
- Marshall Cowell, **Leadership program coordinator**
- Dr. Justine Shaw and Dr. Mary-Anne Lea, **Science Program Coordinators**
- Sarah Anderson and Merryn McKinnon, **Science Communications & Visibility Coordinators**
- Kit Jackson, **Strategy Program Coordinator**
- Kerryn Velleman, **On-board psychologist**
- Lesley-Anne Houghton, **LSI Coach**
- Greg Mortimer, **Expedition Leader**
- Sam Hodder, **Podcaster**
- Oli Sansom, **Photographer**



THE HOMEWARD BOUND TOOL KIT



LSI - A 360 Degree View

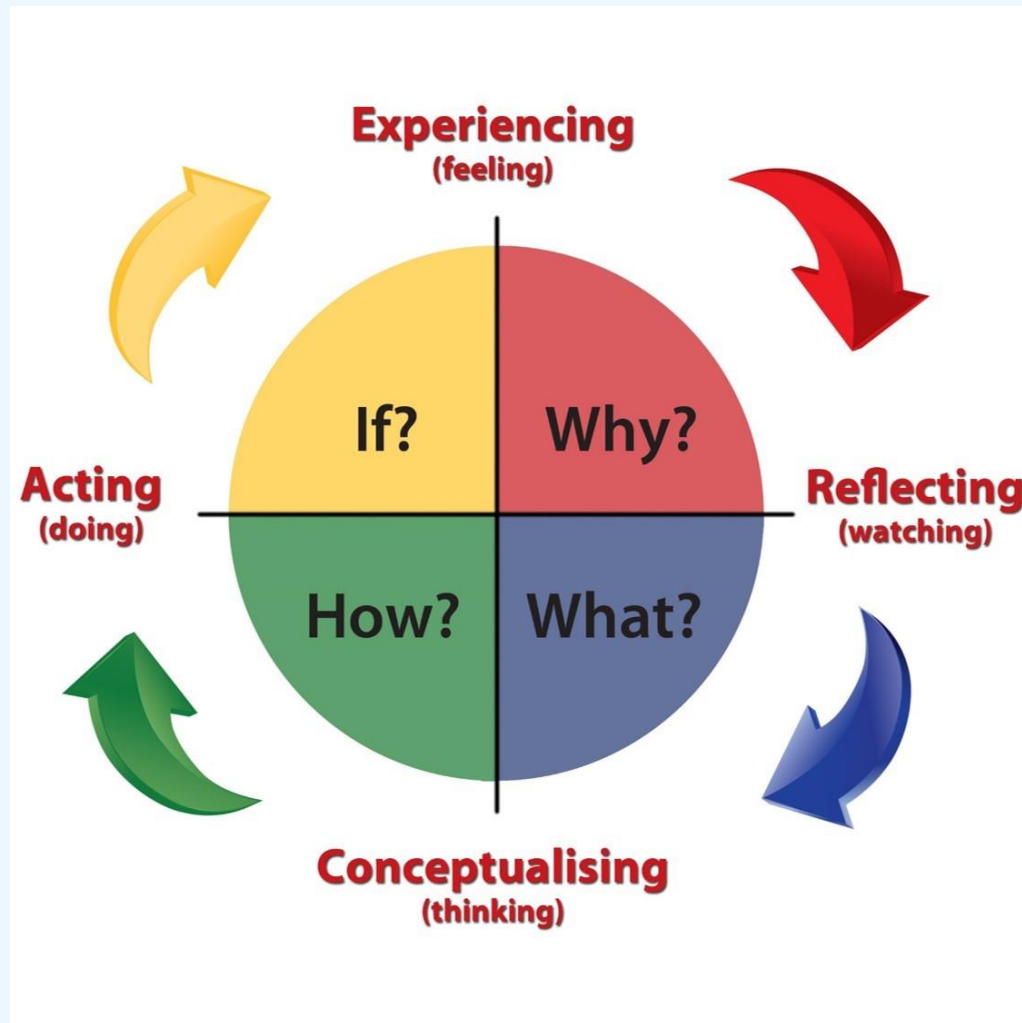


What is the story you tell yourself?

How do others see you?

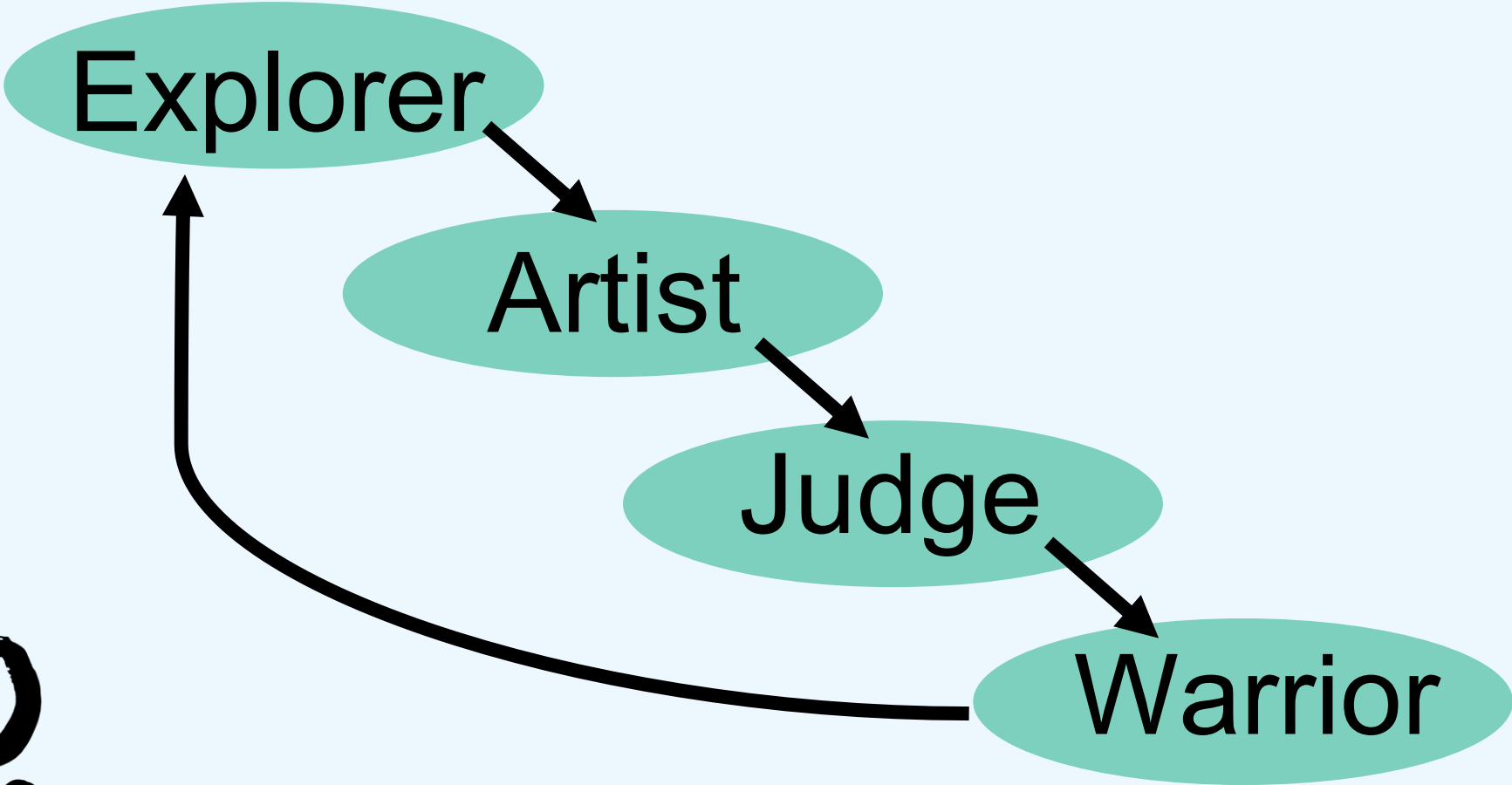
xo

4MAT - How do we Learn?



0
X

Journey of Purpose



0
X

Explorer



Artist



Judge

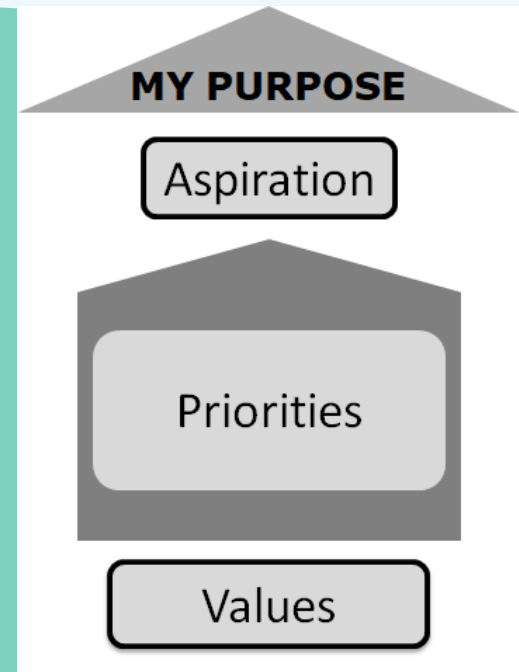


Warrior



Personal Strategy Mapping

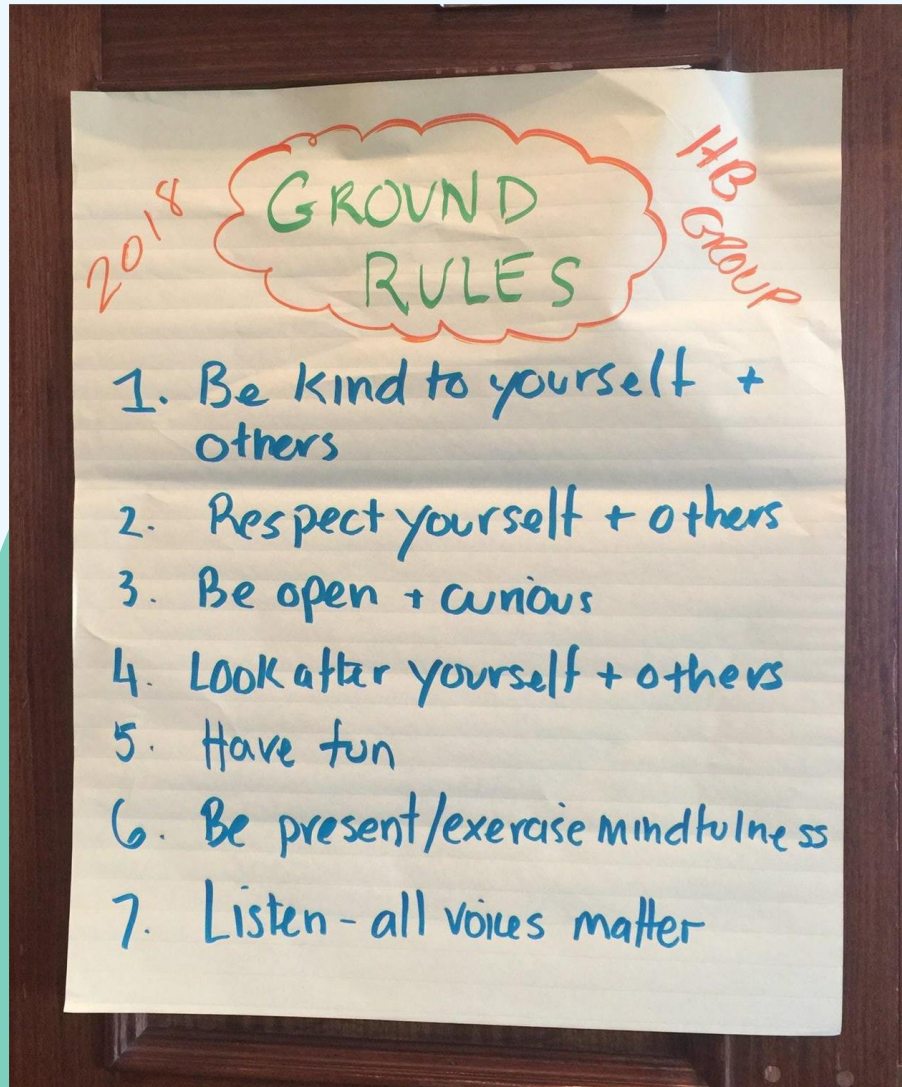
Your Values as Your Foundation



Work
Relationships
Self

OXO

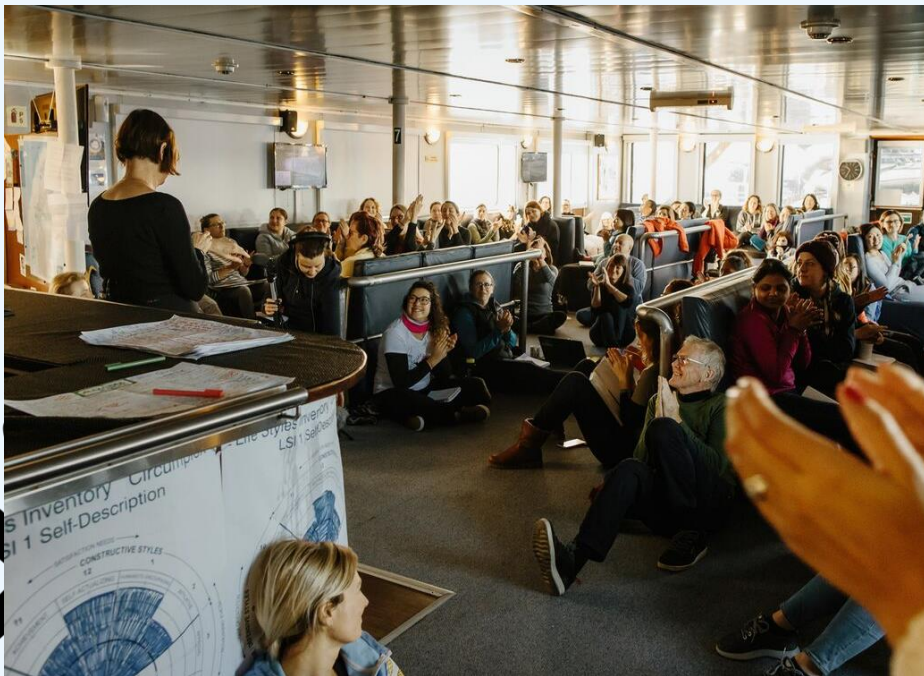
Ground Rules



xo

The Ship - Our Home for 3 Weeks



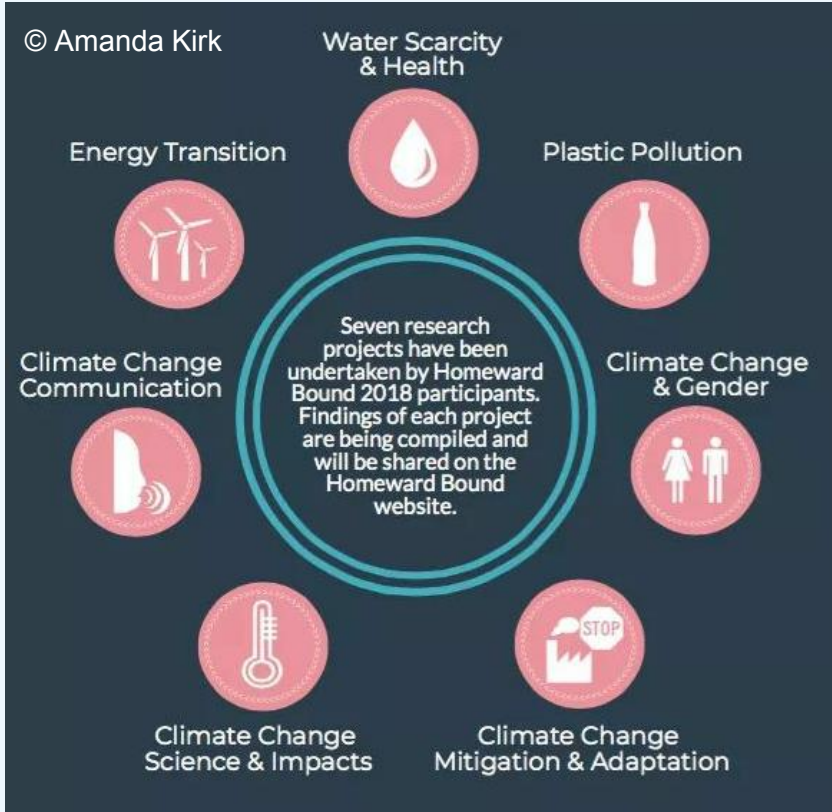


Photos: © Oli Sansom

The Wildlife



Science Themes



Symposium@Sea



Photos: © Oli Sansom

OXO

Research Stations



UK



USA



China



Argentina

The Ice



Glaciers

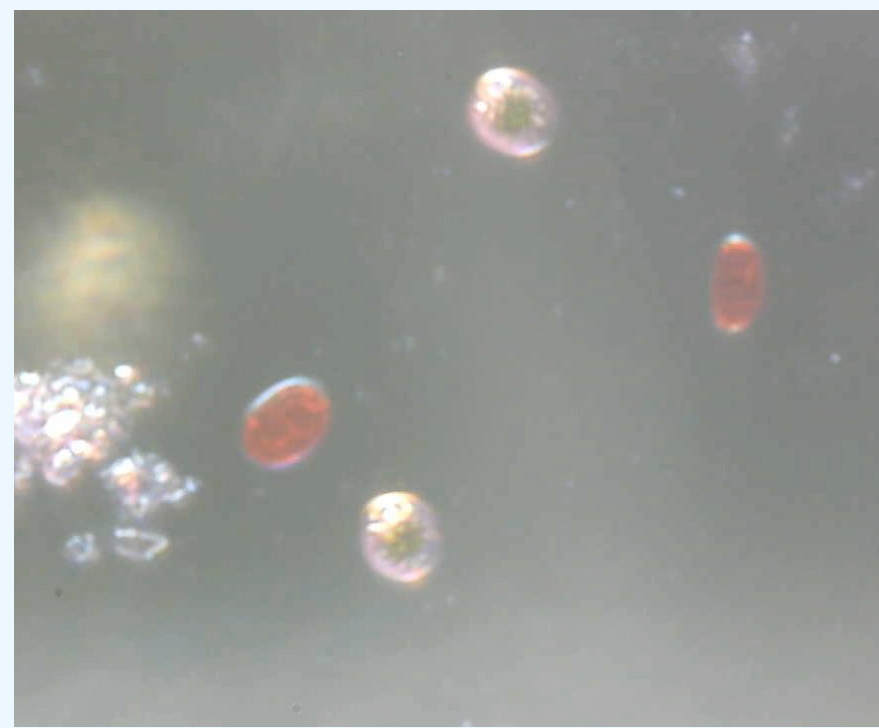
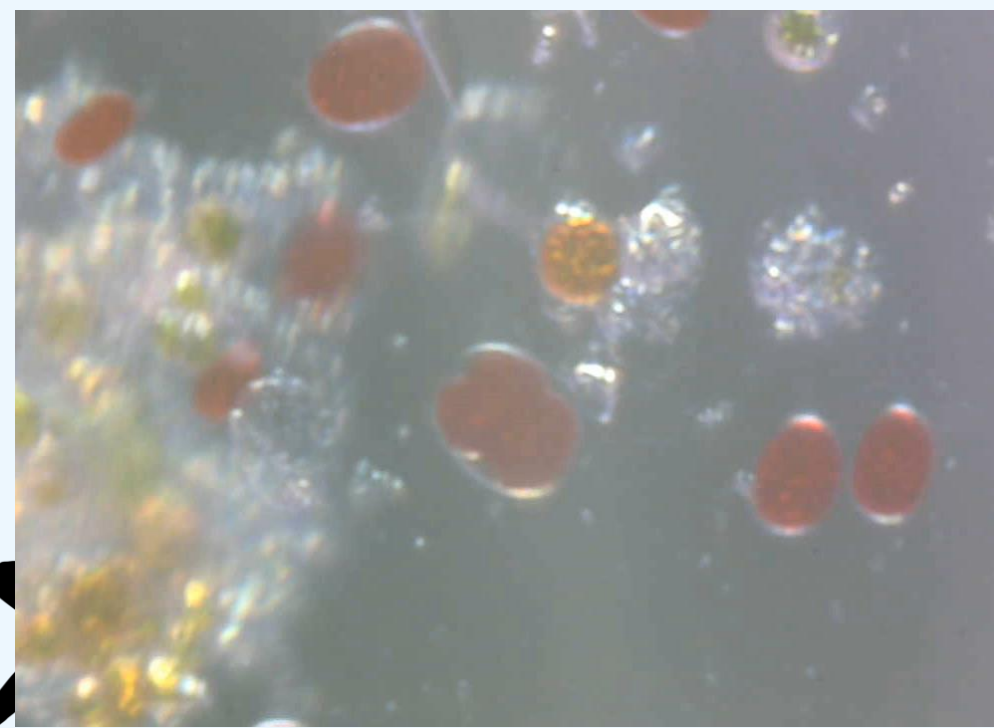
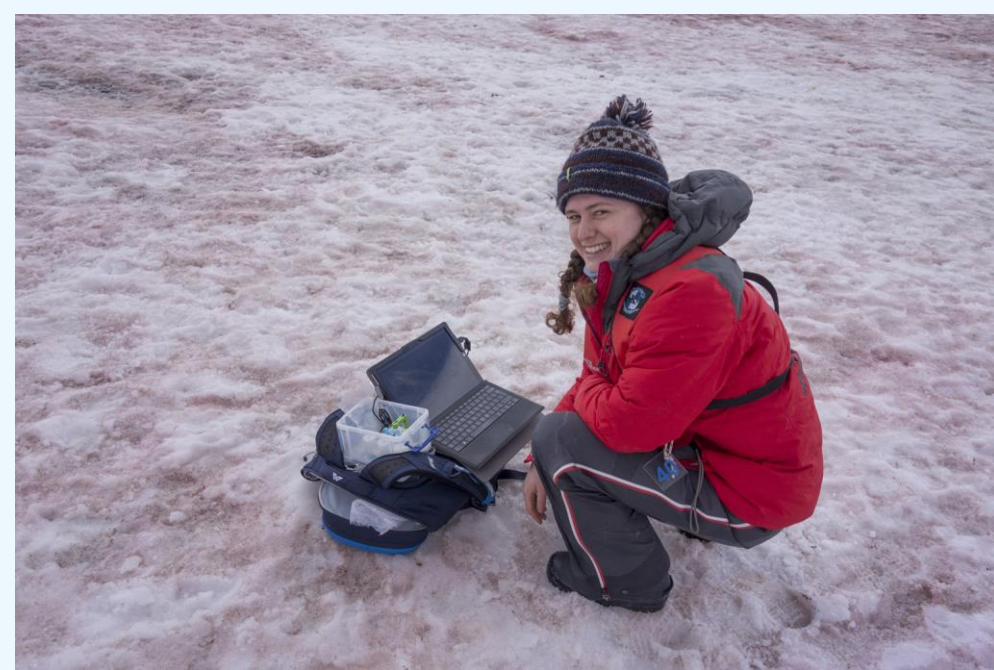


Icebergs



Snow





Sea Ice



The Gullet

Finding a path through frozen seas





Where to from here?





Cambridge Contemporary Dance: 'Connecting Waves'

THANK YOU

Yassen Abbas
Dalia Alkalaj Jones
Rudolf Angermann
Mary and Jeffrey Archer
Andrea Arnold
Angela Birkett
Sabina Bryant
Cheng Chen
Sandra Clements
Ottavio Croze
John Denton
Marlene Drew
Graciella Edo Grigg
Lissa Eyre

Annemarie Fleischmann
Markus Fleischmann
Paul Fleischmann
Ursula Fleischmann
Eva Geyer
Hilary Goodall
Eleanor Hathorn
Frank Holzer
Günter Hörander
Louise Jones
Stella Klein
Beatrice Koenig
Eva Laeverenz

Lara Laeverenz
Farhad Mirfattahi
Luise Mostbeck
Holly O'Neil
Doris Payer
Adrienne Pielou-Boynton
Kaya Raveendran
Ernst Schlogelhofer
Alison Smith
Marietta Strasoldo
Lorenza Toffolon
Taylor Uekert
Disruptive Women

 **BLACKHEATH**
HIGH SCHOOL GDST



DAVID AND CLAUDIA HARDING
FOUNDATION



THE WINTON PROGRAMME FOR THE
Physics of Sustainability



Gonville
& Caius
College

Is it your time?

Applications for Homeward Bound 2020 close May 18th

